

# UltraLink 2

REMOTE KVM ACCESS OVER IP



## Remote KVM access over IP

- High-quality video up to 1280 x 1024
- Very easy to install and operate
- Connect over IP using any web browser
- Single or Dual access models available
- Secure encrypted operation
- Compatible with most KVM switches

## Features and Benefits

- The dual model offers a local KVM port for configuring the UltraLink 2 and direct local access to the computer or KVM switch
- Connect to a remote computer, server, or KVM switch directly or remotely over IP using any Internet browser
- Virtual Media feature allows authorized remote users to transfer files and folders to a computer. This feature makes upgrades possible from remote locations
- 2 - PS/2 to USB adapters are provided for using USB keyboards and mice
- Resolution up to 1280 x 1024
- Solid-state embedded unit for maximum reliability
- Compatible with Rose Electronics KVM switches and most other KVM devices
- Easy to install and configure locally using the dual access model or over your network or USB port using the single access model
- Password security prevents unauthorized configuration and access
- User ID and password required for remote access
- Remote application (Real VNC or Java applet) can be installed directly from the unit
- Up to four simultaneous remote users can access the UltraLink 2 at any one time.
- Front panel indicators show Link, Local or remote connection, VNC, Network Speed, and Power

## The UltraLink™ 2 Advantage . . .

UltraLink 2 sets a new standard for an easy and secure way to remotely manage server room environments, remote standalone applications such as digital signage and other remote applications.

You can access your computers and servers locally, across your network, or over IP using a web browser.

Connect the unit to a Rose Electronics KVM switch and you now have access to as many as 1,000 computers or servers from anywhere in the world.

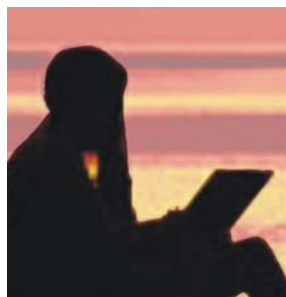
The UltraLink 2 is easy to install and configure. Connect the unit, assign an IP address and network information, remotely connect to the unit and it's ready to use.

Instead of going to a remote site to perform an upgrade or patch, let the remote site come to you. The Virtual Media feature allows the IT professional to remotely access USB equipped systems and perform patches and upgrades without the expense of a trip to the remote site.

On the dual access model, a local KVM station can be connected for direct access to the connected computer.

Front panel indicators shows:

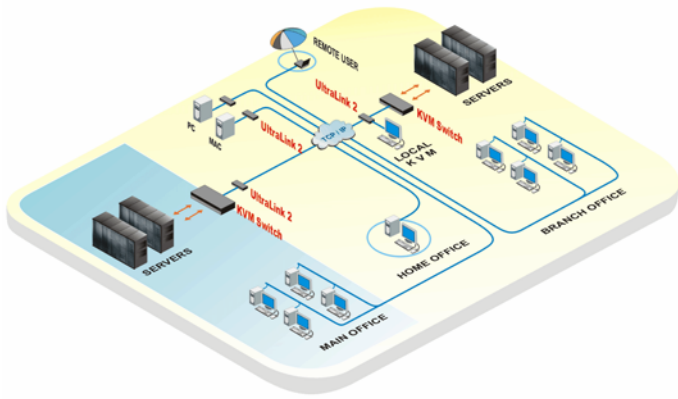
- 1- The network link activity
- 2- Local or remote data received from the computer
- 3- Indicates a remote viewer is connected
- 4- Indicates the Ethernet network speed (10 / 100 Mbs)
- 5- Power indicator



Maintain your systems from anywhere  
in the world

 **ROSE**  
ELECTRONICS  
[WWW.ROSE.COM](http://WWW.ROSE.COM)

# Typical Application



**Introduction** The UltraLink 2 is a versatile and powerful product that extends the range of access to your computers and servers to anywhere in the world. Its advanced design makes it compatible with most KVM switches and computers.

**Installation** The UltraLink 2 is very easy to install and configure. Just connect the unit to your network, a local KVM station, and a computer or KVM switch. Next, assign an IP address and network information to the unit and you're done. Next, from a remote computer, connect to the UltraLink 2's assigned IP address using any web browser. The viewer (Real VNC or the Java applet) can be installed directly from the unit. When complete, the connected computers video will display on the remote monitor and you have complete and secure control of the computer.

**Operation** Access to the UltraLink 2 is either locally using the dual access model or remotely over a network or internet connection

**Security** The UltraLink 2 is designed with the highest regard for security. Remote access requires a user ID and password. All transmissions to and from a remote user are encrypted with the latest AES 128 bit encryption technology. Up to 16 user accounts can be set-up each with separate access permission levels.

**Video settings** The video setting menu gives you access to all of the video settings such as Phase, Threshold, and Horizontal and Vertical position, Color, Brightness and Contrast. These and other settings can be manually set or the UltraLink 2 can automatically determine the best settings using the Calibrate all feature.

**Mouse cursor** The UltraLink 2 uses a two-mouse cursor system in a very intuitive style showing the local cursor and the remote host cursor.

**Video resolution** UltraLink 2 supports a video resolution up to 1280 x 1024

## Part numbers

UL2-SA Single access unit  
 UL2-DA Dual access unit  
 TFR-05D250FSUB-2.5 +5V Power adapter (/SW P/N Suffix)

## Specifications

Dimensions	Width	Depth	Height	Weight
UL2-SA (in) (mm)	2.955 75	4.72 120	1.06 27	0.76 lbs 0.34 kg
UL2-DA (in) (mm)	2.95 75	4.72 120	1.65 42	1.02 lbs 0.46 kg

**Power** Obtained from the host computer's mouse port. Optionally connect a adapter if needed  
 5VDC -1A – Standard  
 5VDC - 4A – Heavy duty for powering up to 4 UltraLink 2 units

**Connectors** Power: Barrel jack  
 Local KVM: Video - HD15F  
 Keyboard - MD6F  
 Mouse - MD6F  
 Host computer: Video – HD15F  
 Keyboard - MD6F  
 Mouse - MD6F  
 Network port: RJ45F

**Chassis** Steel (Black)

**Switches** Power select Switch

**Indicators** LEDs: Power, Link, Local, Remote, VNC, Speed

**Ethernet Link** 10/100 Mbs Ethernet speed

**Environmental** 0°- 45°C / 32°- 113°F,  
 5 - 80% non-condensing RH

**Approvals** FCC, CE

Front / Rear View



■ Phone: 281-933-7673 ■ E-mail: sales@rose.com ■

10707 Stancliff Rd. Houston, TX 77099

Rose Electronics – Europe: +49 (0)2454 969442 Rose Electronics – Asia: +65 6324 2322

DS-UL2-1.4

© Copyright 2008 Rose Electronics. All rights reserved



WWW.ROSE.COM